

INSTALLATION INSTRUCTIONS EASY-MOUNT radar detector mount for: TESLA MODEL 3 and Y

DO NOT PLACE EASY-MOUNT DIRECTLY IN FRONT OF THE STEERING WHEEL! This will defeat the safety advantages of our product. These instructions are for Left Hand drive. Adjust accordingly for Right hand drive. SEE STEP 4 & 6.

EASY MOUNT PLACES YOUR RADAR DETECTOR SAFELY NEAR YOUR CENTRAL TOUCH SCREEN.



For the best installation we recommend using a straight 6-foot-long power cord. Many radar detectors come with this but if you only have a coiled cord you can still install your radar detector with Easy-Mount as shown in instructions. We advise that you purchase a straight cord for the easiest and nicest looking installation. They are typically available for less than \$10 on the internet.

1

Follow the instructions included with your radar detector on how and where to attach hook and loop fasteners to the bottom of your radar detector.

CLEAN DUST AND OILS FROM SURFACES THAT WILL RECEIVE ADHESIVE BACKED STRIPS OR CLIPS.

Generally you must not cover vents and have a clean surface. Two loop fastener strips are supplied for best retention.



2

Attach your radar detector to the Easy-Mount. The receiving end must be over the Easy-Mount label as shown.



**INSTALLATION INSTRUCTIONS EASY-MOUNT radar detector mount for:
TESLA MODEL 3 and Y**

3a

For Straight Cord installation
(recommended):

Route the power cable through 2 cable clips as shown then plug in to the detector.



3b

For Coiled Cord: You can use
your coiled cord temporarily
until you can obtain a straight
cord. A straight cord will provide
the easiest and best looking
installation.

Route power cable through the 2
cable clips as shown then plug in to



4

Correct positioning of the Easy Mount:

***! DO NOT PLACE EASY MOUNT DIRECTLY IN FRONT OF THE STEERING WHEEL!
This will make it difficult to reach safely and defeat the primary purpose of the
EASY-MOUNT. UNINTENTIONALLY BUMPING THE STEERING WHEEL WHILE
DRIVING WITH AUTOPILOT ENGAGED CAN UNEXPECTEDLY DISCONNECT
AUTOPILOT AND CREATE A DANGEROUS CONDITION, ALLOWING YOU LITTLE
TIME TO REACT TO TAKE CONTROL OF THE CAR.***

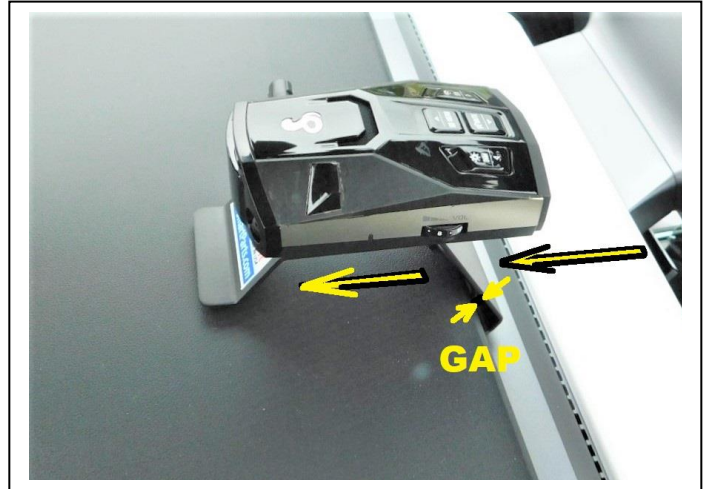
***It will also block a small portion of the air flow from the vents. Position Mount
Easy-Mount as directed which is to the right of the steering wheel.***

***! DO NOT PLACE EASY MOUNT ALL THE WAY TOWARDS THE SIDE WINDOW. IT
IS DESIGNED TO NOT FIT IN THAT AREA TO PREVENT BLOCKING THE SIDE
WINDOW DEFROST VENT WHICH COULD PREVENT DE-FOGGING AND CLEAR
VISION OF THE MIRROR AND BLOCK CLEAR VISION THROUGH THE SIDE
WINDOW. REGISTRATION AND INSPECTIONS STICKERS WHERE REQUIRED
WILL IMPEDE LASER RECEPTION IF MOUNTED IN THAT AREA.***

**INSTALLATION INSTRUCTIONS EASY-MOUNT radar detector mount for:
TESLA MODEL 3 and Y**

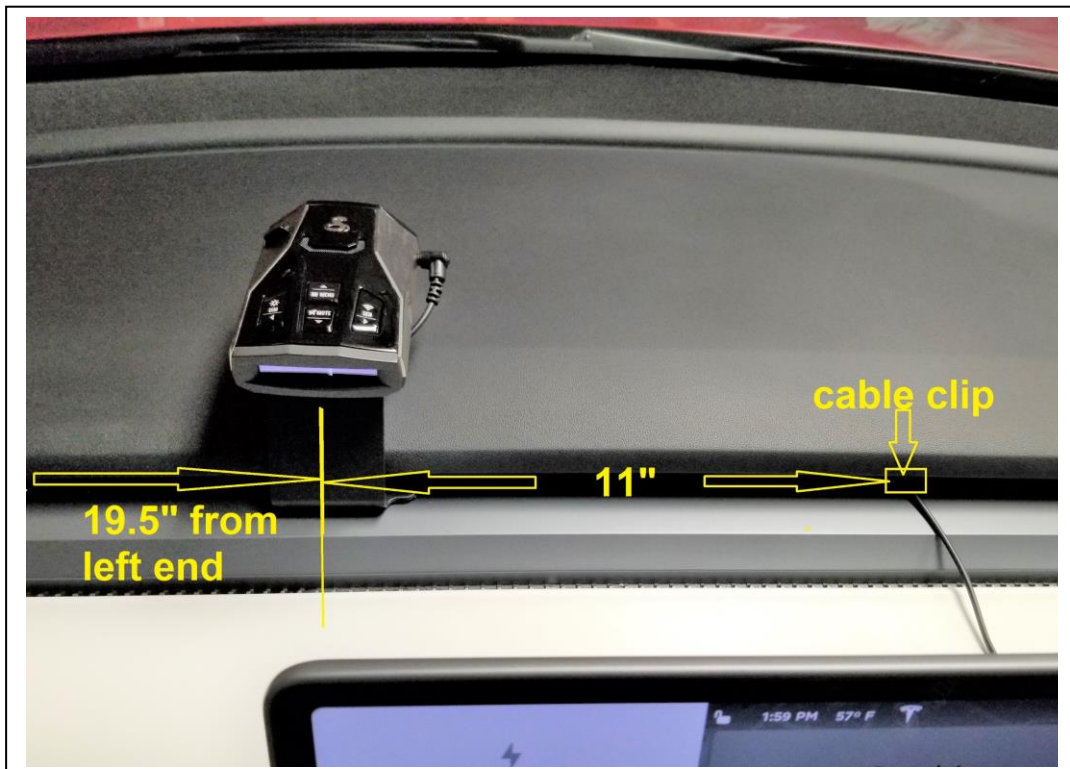
5

Insert the lower tab of the Easy-Mount into the vent slot and gently slide it towards the windshield until it stops. The small gap as shown in the picture provides clearance space for the power cable.



6

The correct position for the center line of the Easy-Mount is approximately 19.5" from left end of dashboard (for left hand drive.) Slide it left and right to find the best position for you. You can vary this position an inch or two either left or right as you use Easy-Mount for a few days. Do not install the locking strip* (step 10) until you are satisfied with your preference for position.

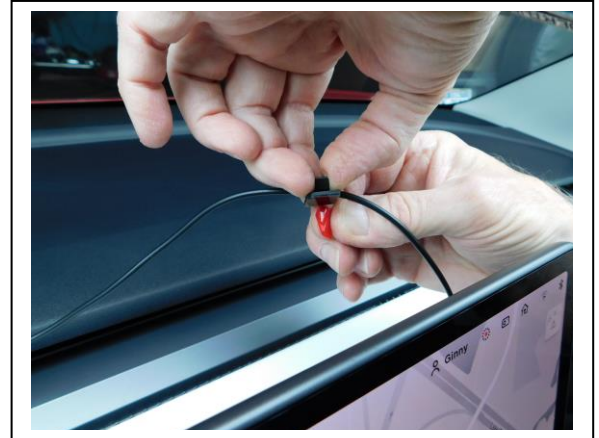


**INSTALLATION INSTRUCTIONS EASY-MOUNT radar detector mount for:
TESLA MODEL 3 and Y**

7a

For Straight Cord:

Secure cable into slot with clip approximately 11" to the right of Easy-Mount. Run cable to power outlet.



7b

For Coiled Cord:

Pre-stretch the coiled power cord and then run it straight down on either side of the Easy-Mount and then towards the 12-volt DC power outlet in the center console.

Temporarily tuck it under side of center console trim and run it to 12-volt DC power outlet in the center console storage compartment. Use clip as shown in step 7 to secure end of cable.



**INSTALLATION INSTRUCTIONS EASY-MOUNT radar detector mount for:
TESLA MODEL 3 and Y**

8

For Straight Cord:

Run cable down into gap along the right side of the center console towards the 12-volt DC power outlet.



9

Secure the cable with the cable clip to prevent it from being pinched between armrest and square bumper. Carefully check to see that the cable does not interfere with the closing of the armrest and that the cable is not pinched.

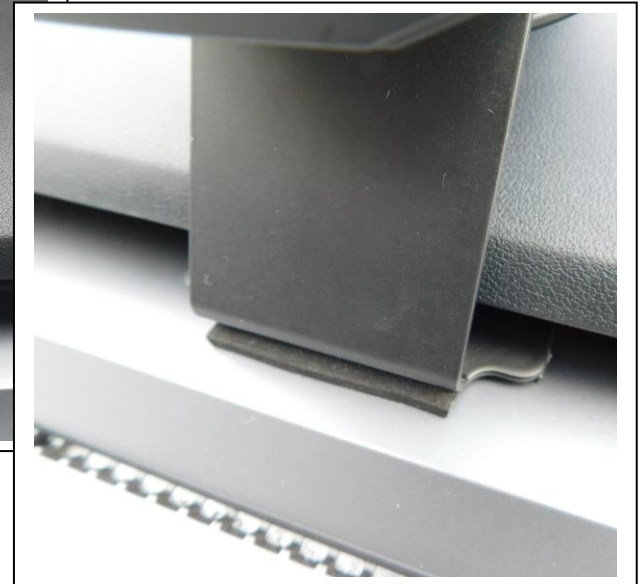


**INSTALLATION INSTRUCTIONS EASY-MOUNT radar detector mount for:
TESLA MODEL 3 and Y**

10

Attach Locking strip*: Use your EASY-MOUNT for a few days to determine the best ergonomic positioning for you.

With the EASY-MOUNT in the position you prefer, then attach the self-adhesive ¼" x 2" locking strip to the silver portion just below the dashboard. The adhesive must face down and not forward. Press it firmly forward and down to adhere to the silver vent. It can be removed in the future. Any residual adhesive from the strip can be removed by gently rubbing with your finger tip. NEVER use any type of adhesive remover or solvent. Just use your finger.



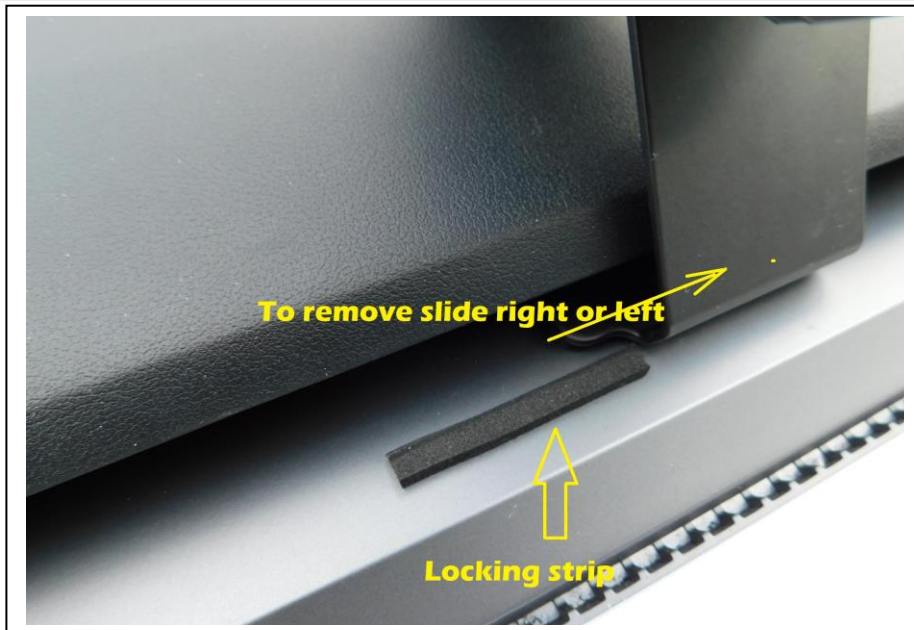
***Locking strip:**

This foam strip will secure the EASY-MOUNT from pulling straight out but still easily slide EASY-MOUNT left or right to make adjustments in position or to remove it completely.

**INSTALLATION INSTRUCTIONS EASY-MOUNT radar detector mount for:
TESLA MODEL 3 and Y**

11

If you need to remove your EASY-MOUNT and Radar Detector to move it to another Model 3 or Y or to clean the dashboard top, just gently slide to the right.



INSTALLATION IS COMPLETE!